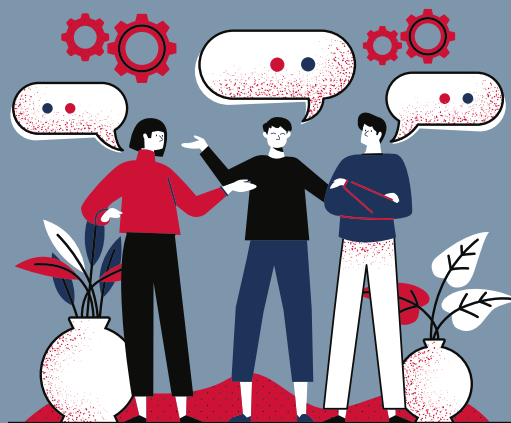


2023 MAY

INTEGRATED MANAGEMENT POLICY



Integrated management policy



The Management of **IDE ELECTRIC, S.L.** considers people to be its main asset, and therefore promotes and maintains the social welfare of its personnel in order to make it a fundamental part of the business strategy. Involving staff in the corporate culture and making them feel the support of both the company and the team is one of its main objectives.

We are committed to **generating wealth in our environment** with the principle of NOT delocalisation, but maintaining competitiveness. To achieve this, we invest in the automation of processes and in the competence of our people, with a firm commitment to provide safe and healthy working conditions for all our staff.

We consider **quality, safety and commitment to the environment** as essential factors for the success of the company, which we translate and deploy into concrete objectives to continuously improve our processes and management system.

IDE ELECTRIC, S.L. as a company dedicated to the design, development, production and marketing of enclosures and switchgear assemblies for low voltage electrical distribution, sockets and plugs for low voltage electrical distribution and enclosures for telecommunications infrastructures, aims to consolidate its position as a benchmark brand in both the national and international markets through the positioning of its products in the distribution sector.

Achieving customer satisfaction is essential and to this end, we work to improve the competitiveness of the products manufactured and the service provided, optimising the quality - price - delivery time ratio, without losing sight of the needs and expectations of other interested parties, so that our company contributes effectively to society in a responsible and sustainable manner.

We comply with customer, legal and regulatory requirements and any requirements necessary for the specified or intended use of the products, as well as any other applicable environmental and occupational health and safety requirements, in order to prevent contamination of the environment and any damage, injury or deterioration of the health of our personnel.

As a company committed to the environment, **IDE ELECTRIC, S.L.** seeks to contribute to sustainable development, promoting environmental protection in our activities, including continuous environmental improvement and commitment to the prevention of pollution as relevant aspects. Continuous improvement of energy performance, with an analysis of significant consumption, implementing actions to improve energy efficiency in the design of our facilities and equipment. Encouraging the purchase of energy-efficient products and services and carrying out information and awareness-raising actions related to energy saving.

The Management of IDE ELECTRIC, S.L. assumes as one of its fundamental commitments the promotion of participation and consultation on health and safety at work among its workers, so that they are an active part of our commitment to eliminate dangers and reduce risks through the continuous improvement of the safety conditions and the protection of the health of our personnel.